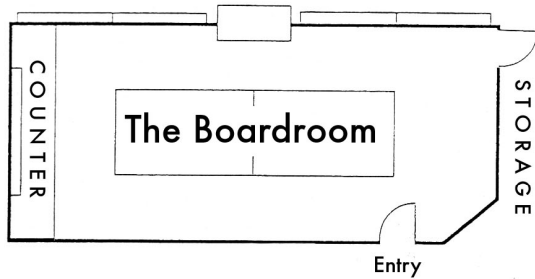


Floor Plans

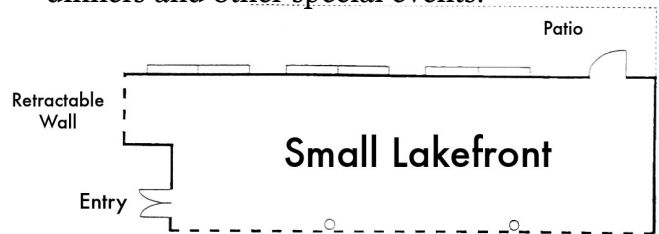
The Boardroom ~ (29x11)

This 319 square foot room can accommodate groups up to 18. Guests are seated at one long boardroom-sized table, ideal for meetings, classes or small celebrations.



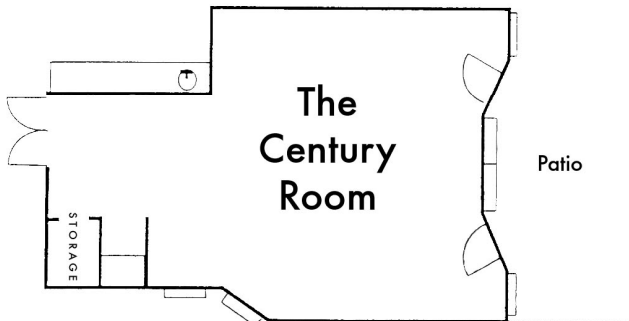
Small Lakefront Room ~ (16x40)

This popular 640 square foot room can accommodate groups of 25-30. With a great view of the lake, this room is ideal for meetings, dinners and other special events.



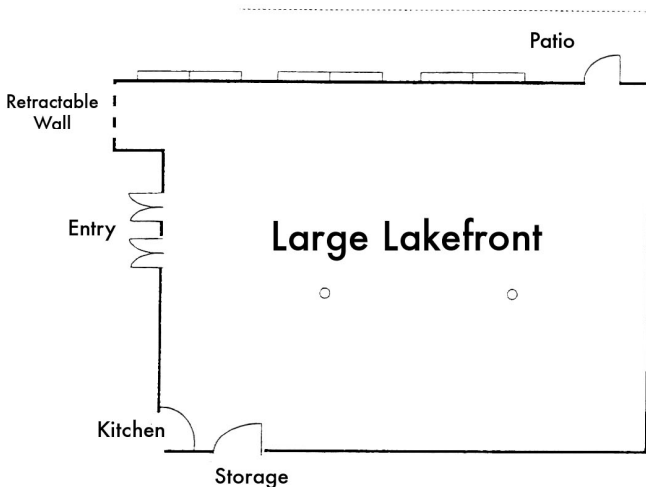
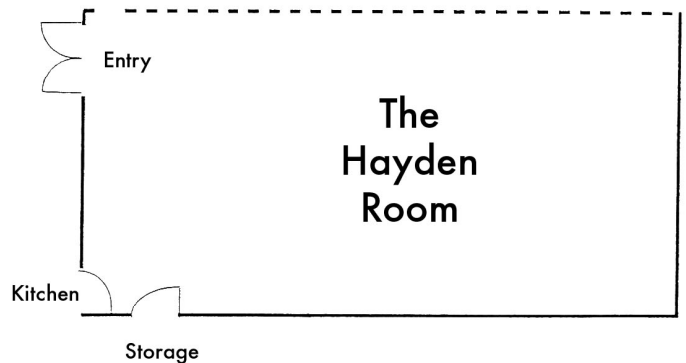
The Century Room ~ (30x30)

This 900 square foot room can accommodate groups up to 56. Located in the hotel, this room has a private patio and a view of the lake.



The Hayden Room ~ (21x40)

This 840 square foot room can accommodate groups up to 50. This is a partitioned room suitable for meetings, conferences and meals.



Large Lakefront Room ~ (37x40)

Our largest room at 1360 sq. ft., the Large Lakefront is actually the Small Lakefront and Hayden Room - without the divider. Accommodates groups up to 100. Has patio access and provides a wonderful setting for large meetings, wedding receptions, company parties and other events.

(Drawings not to scale.)